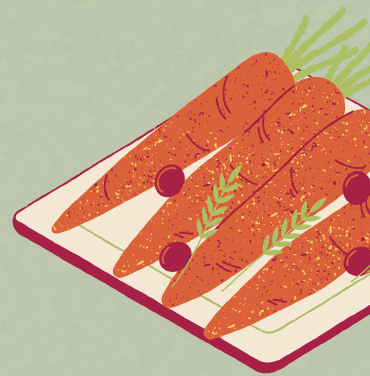


Available Wednesday to Saturday

# Light

## MENU



### LIGHT MEALS

#### LOADED FRIES | \$20.00

locally Sourced Beef Steak OR  
Crumbed Chicken

#### PORK BELLY BITES | \$15.00

Locally Sourced Pork Belly bites in a  
BBQ Sauce

#### SEAFOOD BASKET | \$20.00

Prawn Cutlet, Calamari Rings, Fish  
bites, Seafood bites, Scallop

**ADD CHIPS \$3.00**

#### B.L.T | \$18.00

Bacon, Lettuce, Tomato & Ailoi  
on toasted bread.

#### GARLIC PRAWNS | \$23.00

Garlic Prawns (7) with rice  
& Salad



### SALADS

#### LARGE GARDEN SALAD | \$18.00

Crisp Lettuce, Carrot, Tomato,  
Cucumber, olives & Feta

#### CEASER SALAD | \$22.00

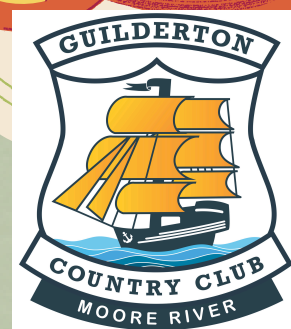
Cos lettuce, crispy bacon, parmesan,  
boiled egg, croutons & dressing

**ADD CHICKEN \$6.00**

#### PUMPKIN & BEETROOT | \$22.00

Mixed leaf salad, Roasted Pumpkin,  
Beetroot, Feta & Pine Nuts

**ADD CHICKEN \$6.00**



[guildertoncc@bigpond.com](mailto:guildertoncc@bigpond.com)

08 9577 1013

Wedge Street, Guilderton